

iSC GmbH
Customer Service
Eschenstraße 6
94405 Landau/Isar

Telephone: +49 9951 959 2019
Email: service-de@einhell.com



Cordless Lawn Mower
GP-CM 36/47 S HW Li (4x4,0Ah)

Article number: 3413200
Ident number: 21051

Spare parts

Pos	Art.	Ident number	Product Name
	4511549	00010	18V 4,0Ah for Kit SP
	4512079	00010	Power-X-Twincharger 3A f. Kit
	3413201	00030	GP-CM 36/47 S HW Li for kit

18V 4,0Ah for Kit SP

Article number: 4511549
Ident number: 00010

Spare parts

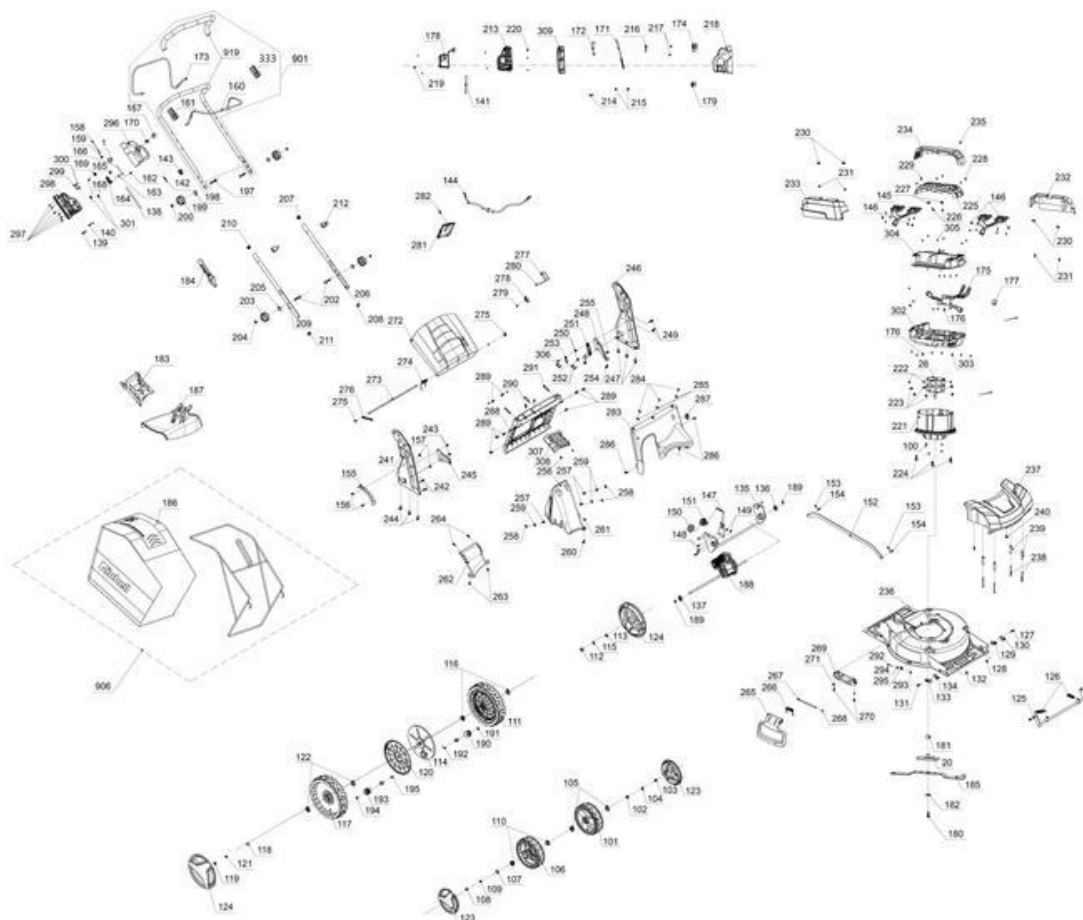
Pos	Art.	Ident number	Product Name
	451211202099	00000	color box 2x4,0Ah&Twincharger
	451154901791	00000	data label
099	451204203099	00000	color box
850	451154901850	00000	battery Li-Ion 18V /4 Ah

Power-X-Twincharger 3A f. Kit

Article number: 4512079
Ident number: 00010

Spare parts

Pos	Art.	Ident number	Product Name
852	451207901852	00000	Power X-Change Twincharger 3A



Spare parts

Pos	Art.	Ident number	Product Name	Pos	Art.	Ident number	Product Name
001	341320101001	00000	switch on/off	162	341320101162	00000	screw
020	341320101020	00000	Blade holder	163	341320101163	00000	locknut
026	341320102026	00000	DC brushless-type motor	164	341320101164	00000	connecting lever
099	341320005099	00000	color box	165	341320101165	00000	spring
100	341320101100	00000	attachment screw	166	341320101166	00000	switch operating lever
101	341320101101	00000	wheel front left	167	341320101167	00000	push button
102	341320101102	00000	bush	168	341320101168	00000	screw
103	341320101103	00000	attachment nut	169	341320101169	00000	retainer
104	341320101104	00000	washer	170	341320101170	00000	return spring
105	341320101105	00000	Bearing bush - metallic	171	341320101171	00000	linkage
106	341320101106	00000	wheel front right	172	341320101172	00000	fixing bracket
107	341320101107	00000	bush	174	341320101174	00000	function switch
108	341320101108	00000	attachment nut	175	341320102175	00000	Main board / main PCB
109	341320101109	00000	washer	176	341320101176	00000	screw
110	341320101110	00000	Bearing bush - metallic	177	341320101177	00000	magnet ring
111	341320101111	00000	wheel rear left	178	341320101178	00000	Self driving control PCB
112	341320101112	00000	bush	179	341320101179	00000	control lever
113	341320101113	00000	attachment nut	180	341320101180	00000	blade attachment screw
114	341320101114	00000	cover	181	341320101181	00000	bush
115	341320101115	00000	washer	182	341320101182	00000	standard washer
116	341320101116	00000	Bearing bush - metallic	183	341320101183	00000	Mulching plug
117	341320101117	00000	wheel rear right	184	341320101184	00000	Cleaning tool
118	341320101118	00000	bush	185	341320101185	00000	blade
119	341320101119	00000	attachment nut	187	341320101187	00000	side discharge chute
120	341320101120	00000	cover	188	341320102188	00000	Rear wheel drive assembly
121	341320101121	00000	washer	189	341320101189	00000	retainer
122	341320101122	00000	Bearing bush - metallic	190	341320101190	00000	drive pinion left
123	341320101123	00000	wheel cap front	191	341320101191	00000	retainer
124	341320101124	00000	wheel cap rear	192	341320101192	00000	bolt
125	341320101125	00000	axis	193	341320101193	00000	drive pinion right
126	341320101126	00000	return spring	194	341320101194	00000	retainer
127	341320101127	00000	screw	195	341320101195	00000	bolt
128	341320101128	00000	locknut	197	341320101197	00000	screw
129	341320101129	00000	plastic base	198	341320101198	00000	washer
130	341320101130	00000	plastic covering	199	341320101199	00000	star handle nut
131	341320101131	00000	screw	200	341320101200	00000	nut
132	341320101132	00000	locknut	202	341320101202	00000	screw
133	341320101133	00000	plastic base	203	341320101203	00000	star handle nut
134	341320101134	00000	plastic covering	204	341320101204	00000	nut
135	341320101135	00000	axis	205	341320101205	00000	standard washer
136	341320101136	00000	ball bearing	206	341320101206	00000	attachment tube left
137	341320101137	00000	ball bearing	207	341320101207	00000	cover
138	341320101138	00000	Cable switch unit / motor	208	341320101208	00000	plastic cap
139	341320101139	00000	cord grip	209	341320101209	00000	attachment tube right
140	341320101140	00000	screw	210	341320101210	00000	cover
141	341320101141	00000	Cable switch unit/drive motor	211	341320101211	00000	plastic cap
142	341320101142	00000	junction cable electrical	212	341320101212	00000	rope clip
143	341320101143	00000	safety plug	213	341320101213	00000	cover down
144	341320101144	00000	Connecting line D	214	341320101214	00000	cord grip
145	341320101145	00000	contacts	215	341320101215	00000	screw
146	341320101146	00000	screw	216	341320101216	00000	metal plate
147	341320101147	00000	adjustment lever	217	341320101217	00000	screw
148	341320101148	00000	screw	218	341320101218	00000	cover up
149	341320101149	00000	locknut	219	341320101219	00000	screw A
150	341320101150	00000	handle shell left	220	341320101220	00000	screw B
151	341320101151	00000	handle shell right	221	341320101221	00000	motor housing
152	341320101152	00000	adjustment rod	222	341320101222	00000	screw
153	341320101153	00000	split pin	223	341320101223	00000	standard washer
154	341320101154	00000	bush	224	341320101224	00000	attachment screw
155	341320101155	00000	adjustment plate	225	341320101225	00000	Holder contact plate
156	341320101156	00000	screw	226	341320101226	00000	screw A
157	341320101157	00000	locknut	227	341320101227	00000	standard washer
158	341320101158	00000	linkage	228	341320101228	00000	screw B
159	341320101159	00000	fixing bracket	229	341320101229	00000	screw C

Pos	Art.	Ident number	Product Name
230	341320101230	00000	holding plate
231	341320101231	00000	screw
232	341320101232	00000	cover left
233	341320101233	00000	cover right
234	341320101234	00000	cover
235	341320101235	00000	screw
236	341320101236	00000	basic housing
237	341320101237	00000	axle cover ahead
238	341320101238	00000	screw A
239	341320101239	00000	guide bush
240	341320101240	00000	screw B
241	341320101241	00000	push handle holder right
242	341320101242	00000	screw
243	341320101243	00000	locknut
244	341320101244	00000	screw
245	341320101245	00000	metal plate
246	341320101246	00000	push handle holder left
247	341320101247	00000	screw
248	341320101248	00000	metal plate
249	341320101249	00000	screw A
250	341320101250	00000	locknut
251	341320102251	00000	cable guide
252	341320101252	00000	screw
253	341320101253	00000	cord grip
254	341320101254	00000	screw B
255	341320101255	00000	locknut
256	341320101256	00000	Ejection tunnel
257	341320101257	00000	screw A
258	341320101258	00000	locknut
259	341320101259	00000	standard washer
260	341320101260	00000	screw B
261	341320101261	00000	locknut
262	341320101262	00000	support bracket
263	341320101263	00000	screw A
264	341320101264	00000	screw B
265	341320101265	00000	ejection baffle
266	341320101266	00000	return spring
267	341320101267	00000	bolt
268	341320101268	00000	retainer
269	341320101269	00000	holder plate
270	341320101270	00000	screw
271	341320101271	00000	standard washer
272	341320101272	00000	ejection baffle
273	341320101273	00000	bolt
274	341320101274	00000	return spring
275	341320101275	00000	nut
276	341320101276	00000	fixing ring
277	341320101277	00000	locking lever ejector flap
278	341320101278	00000	fitting
279	341320101279	00000	screw
280	341320101280	00000	rubber bushing
281	341320101281	00000	Inspection window cover
282	341320101282	00000	screw
283	341320101283	00000	cover ahead
284	341320101284	00000	screw A
285	341320101285	00000	standard washer
286	341320101286	00000	screw B
287	341320101287	00000	rubber sleeve
288	341320101288	00000	cover rear
289	341320101289	00000	screw A
290	341320101290	00000	screw B
291	341320101291	00000	metal plate
292	341320101292	00000	screw
293	341320101293	00000	locknut
294	341320101294	00000	return spring
295	341320101295	00000	latch
296	341320101296	00000	upper switch housing
297	341320101297	00000	screw
298	341320101298	00000	lower switch housing

Pos	Art.	Ident number	Product Name
299	341320101299	00000	cord grip
300	341320101300	00000	special screw
301	341320101301	00000	rubber bushing
302	341320101302	00000	motor housing cover
303	341320101303	00000	screw
304	341320101304	00000	battery slot housing
305	341320101305	00000	screw
306	341320101306	00000	screw
307	341320102307	00000	gear cover
308	341320101308	00000	screw
309	341320101309	00000	fitting
901	341320102901	00010	handle assembly
906	341320101906	00010	Catching / Collecting Assembly

handle assembly

Article number: 341320102901
Ident number: 00010

Spare parts

Pos	Art.	Ident number	Product Name
160	341320101160	00000	switch lever
161	341320102161	00000	handle holder
173	341320101173	00000	operating lever
333	341320102333	00000	switch lever holder
919	341320102919	00010	Handle assembly

Catching / Collecting Assembly

Article number: 341320101906
Ident number: 00010

Spare parts

Pos	Art.	Ident number	Product Name
186	341320101186	00000	catch bag

Handle assembly

Article number: 341320102919
Ident number: 00010

Spare parts

Pos	Art.	Ident number	Product Name
196	341320102196	00000	push handle
201	341320101201	00000	foam material